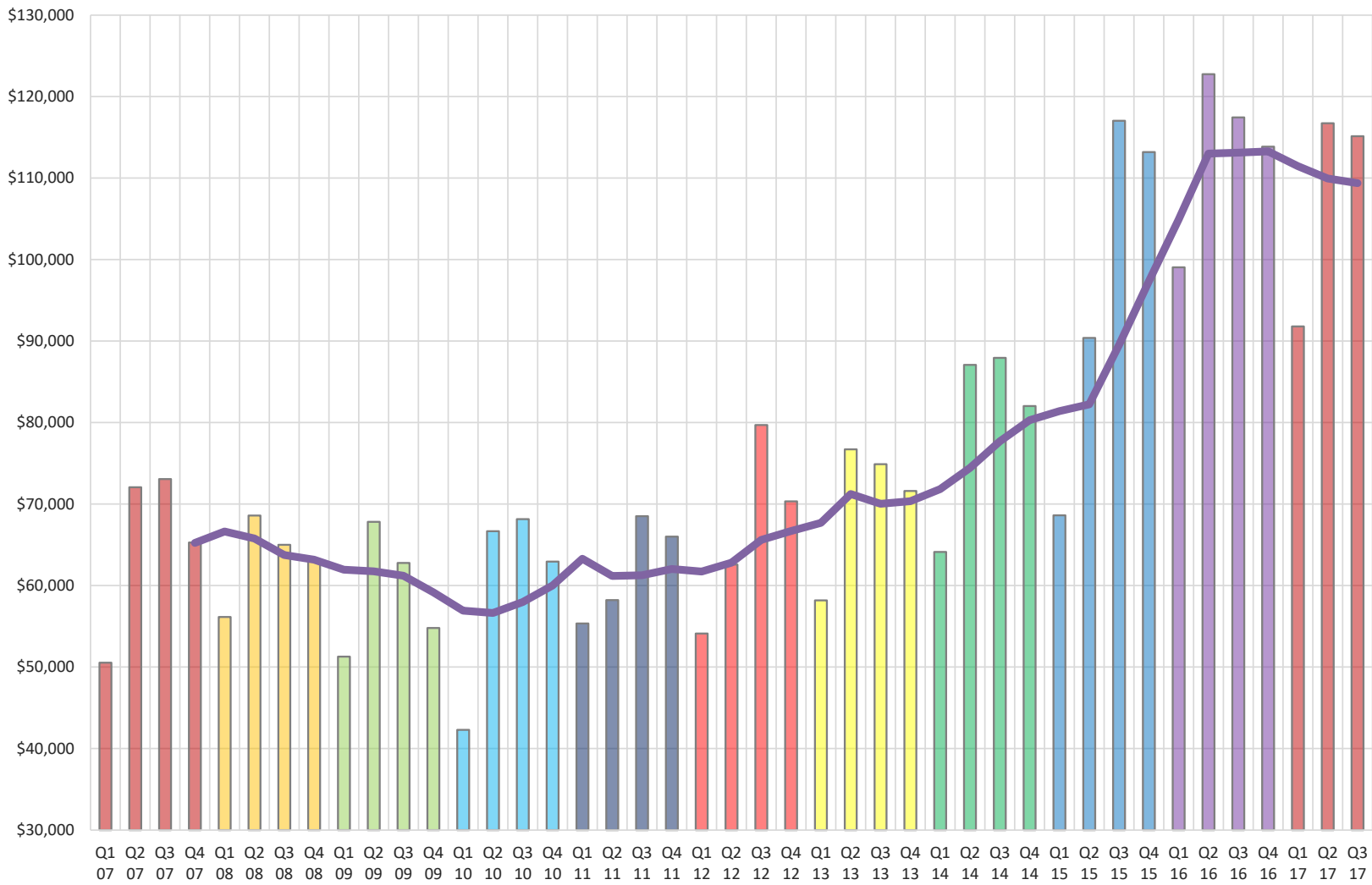


**Historic District economic vitality**  
as measured by quarterly meals tax collection and its one-year moving average



Year-to-year comparison	
Year	vs. prior year
2006	99%
2007	104%
2008	97%
2009	94%
2010	101%
2011	103%
2012	108%
2013	106%
2014	114%
2015	121%
2016	116%
2017	95%
2017: Jan to Sept 2016 comparison	

> Amounts shown are the meals taxes generated by Historic District dining establishments.

Notes: > Quarters are the three months when the tax revenue was generated, e.g., "Q1 17" is the tax collected on January to March 2017 meal sales.

> The data has been adjusted for inflation and normalized to the current 6.25% tax rate.